

England Peat Map: Extent and depth of peaty soils



Sam Dixon, Christoph Kratz, Chris Miller, Alex Hamer, Mike Prince, Charlie Hart, Craig Dornan & Andrew Webb
peatmap@naturalengland.org.uk

© Natural England/Jacqueline Ogden

What is the England Peat Map?

- Baseline national-scale maps of predicted peat extent, depth and condition in England by March 2024
- Developed by a team with expertise in ecology & field surveying, earth observation & data science
- Created using new and existing field survey data, satellite imagery and geospatial data in machine learning frameworks

Our approach

- We will use a *modelling* approach as opposed to a *mapping* approach used previously
- We have chosen this approach because:
 - It is more explicit about uncertainty
 - England is too large to map in detail
 - Can be enhanced with detailed maps and/or models
- The models will be trained using both existing data and an extensive new field survey programme
- Our model will utilise several predictor datasets. These are national mapping and satellite products which have a relationship with peat extent and/or depth

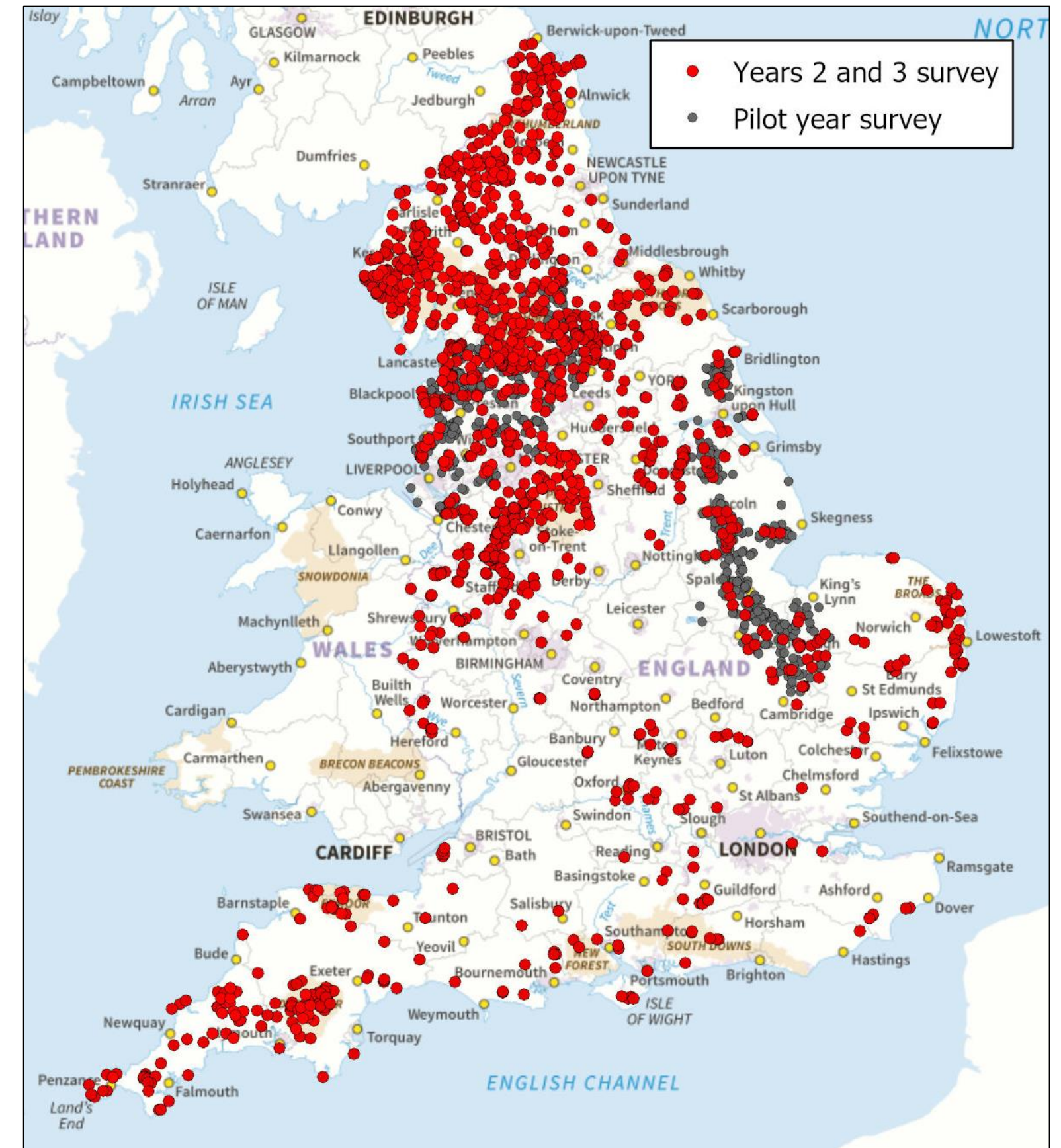


Figure 1: Field survey locations. Half of years 2 and 3 survey points will be surveyed.

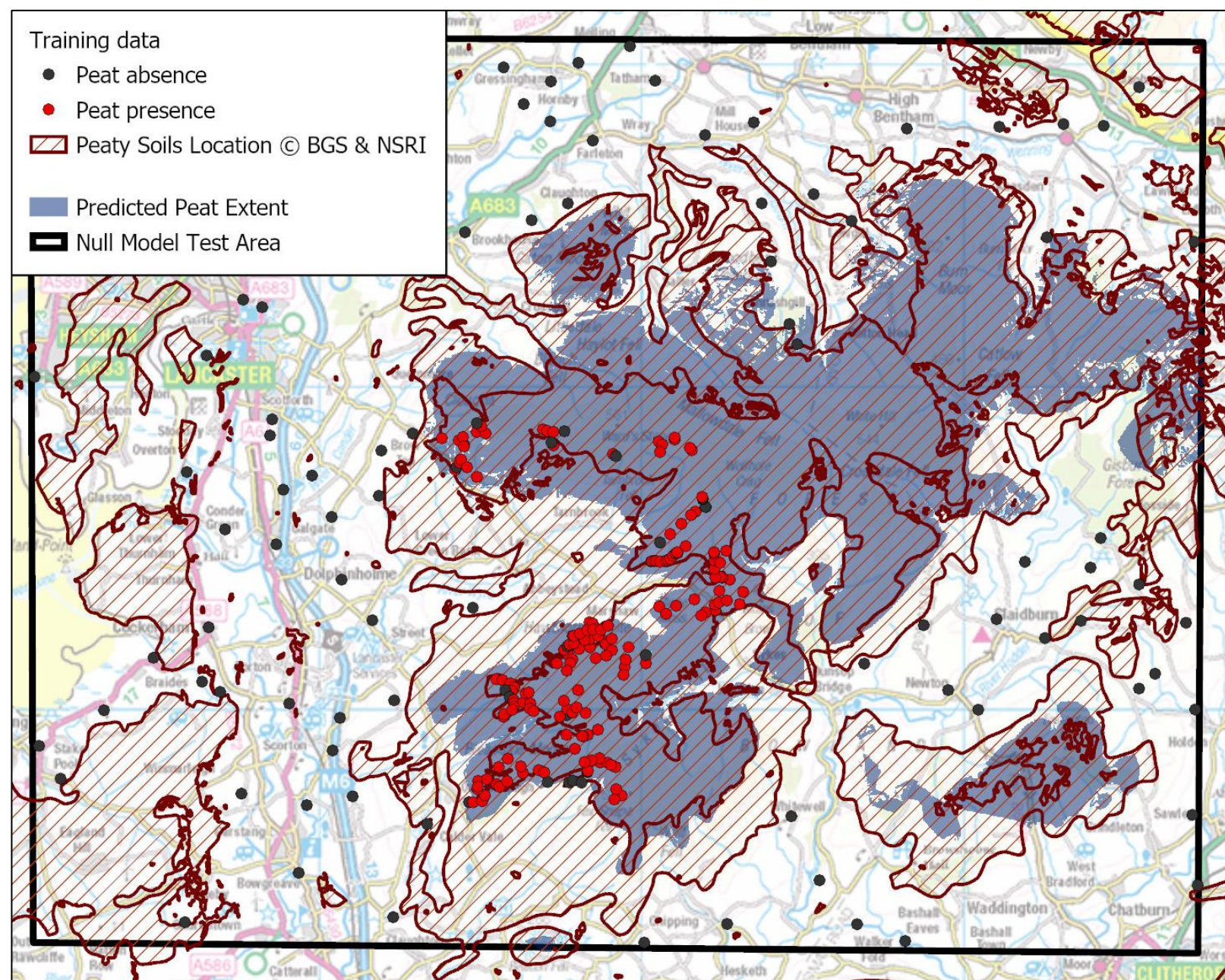


Figure 2: Example *null model* output for peat extent with peaty soils location for comparison. Peat data supplied by the EA.

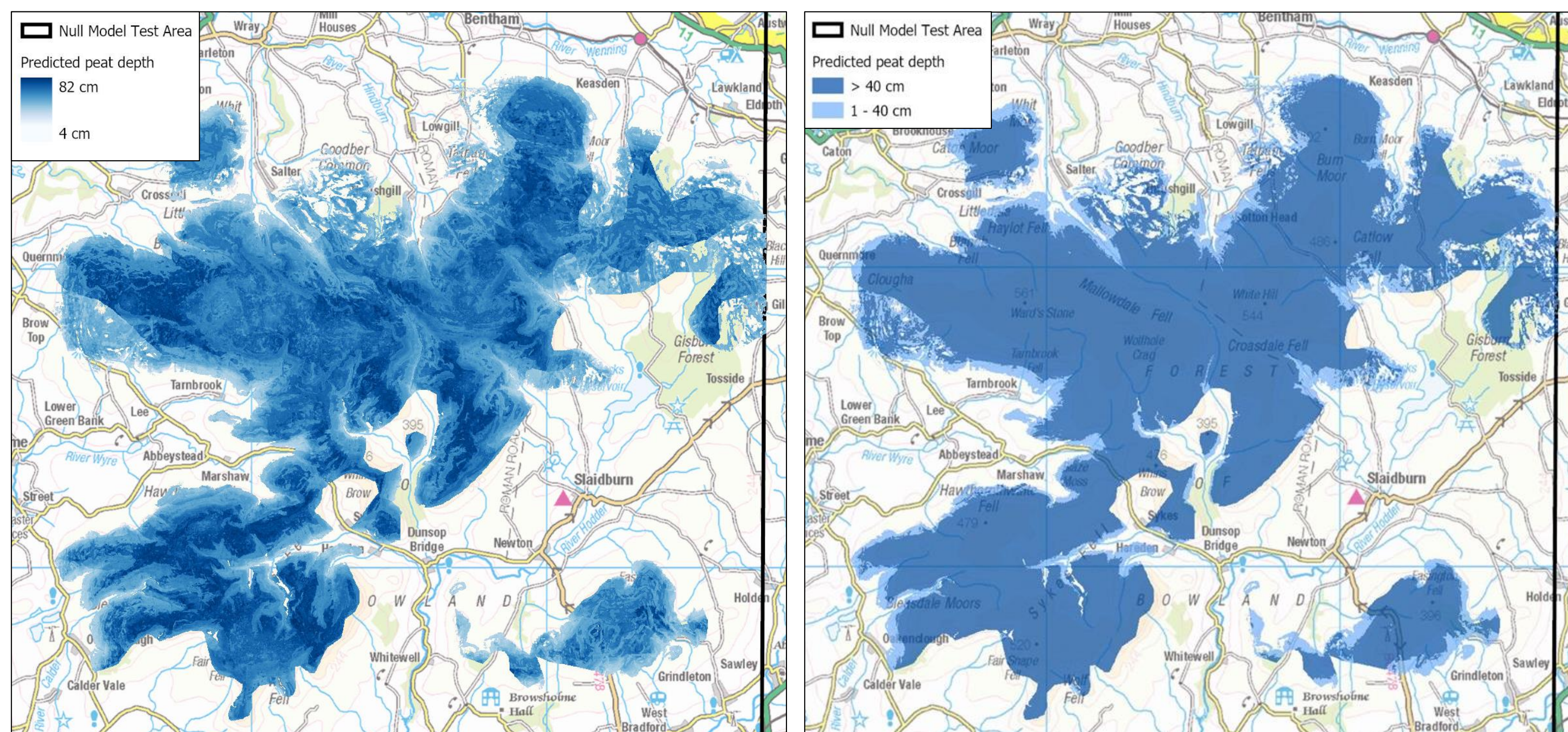
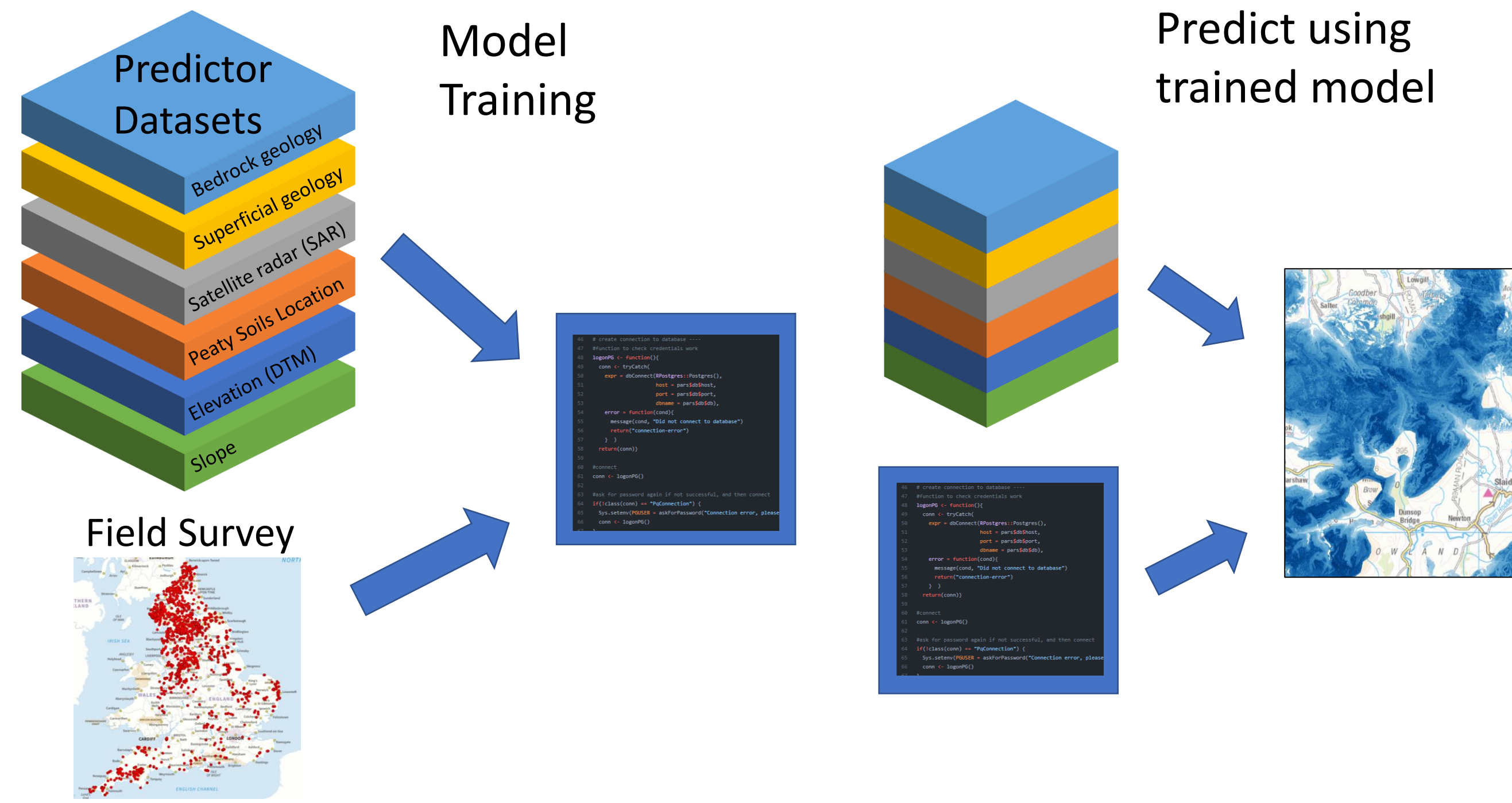


Figure 3: Example *null model* outputs for peat depth (left) and example showing how this can be classified (right)

How we plan to improve our outputs

- Targeted field survey. We will focus on:
 - Transition between shallow and deep peat
 - Lowland peats
- Improved modelling
 - Additional predictors
 - Interpolation (kriging)
 - Ensemble modelling