

Scaling up conservation

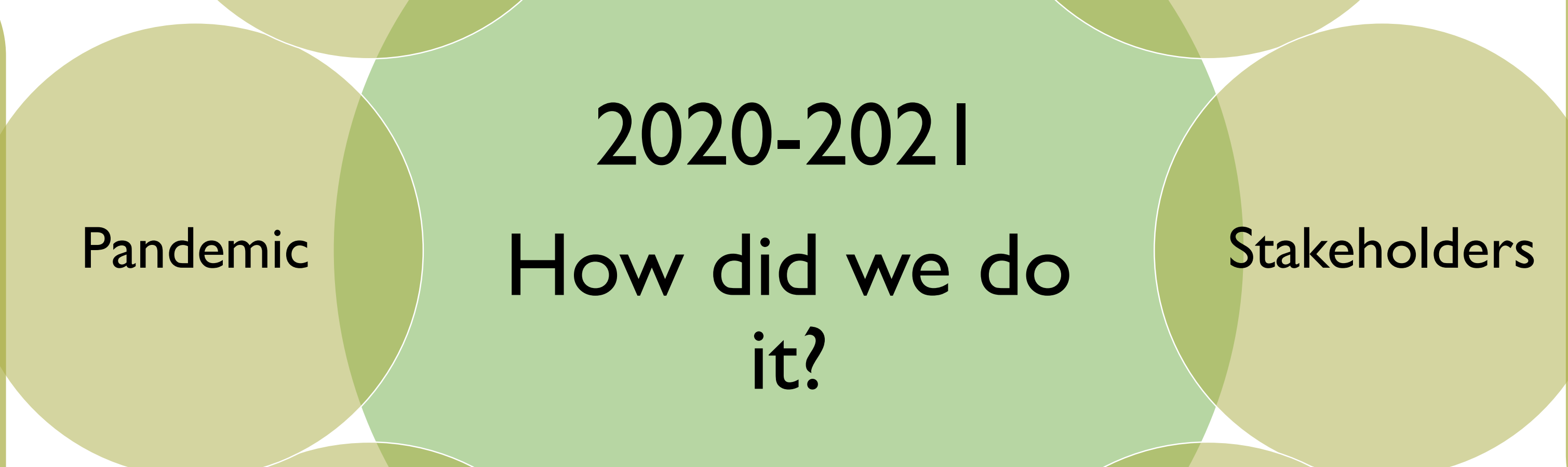
MoorLIFE 2020
Water Environment Grant
Higher Level Stewardship
DEFRA Peatland Restoration Fund
Mend our Mountains
Bradford Council NFM Pilot
Severn Trent WINEP
Yorkshire Water WINEP
EA Upper Irwell NFM
Woodland Trust

36 different sites!
10,000 gully blocks
1035 ha sphagnum planted
5836 bags of brash
185 ha lime, seed and fertiliser
68 ha plug plants
1.2km footpath restoration

What next?
How do we retain staff?
Challenges of new funding streams

£ 3 million direct restoration
10 projects
EU Life project final year

24th March 2020 – non essential travel to cease and all staff to work from home
4 days later MFFP Staff set up protocols and safe working processes to enable the delivery of £3 million whilst working from home.



Identify, engage and keep happy!
Landowner
Farmer
Farmer Agent
Gamekeeper
Shoot Agent
Water Company site manager
Natural England Advisor

Shared Vision

Peak District National Park Authority	RSPB South Pennines Park NFU
Environment Agency	Heather Trust
Yorkshire Water	Woodland Trust
Severn Trent Water	British Mountaineering Council
United Utilities	
National Trust	
Natural England	

Flexible yet firm contract management

- Design and build where specific design is key
- Achievable milestones
- Quality check processes in place
- Weekly reporting

Split work types
Helicopters
Machine Work
Manual Work
Framework Contracts

Upskill
Go local
Workshops
Lower pre-requisites

By 2050 the upland landscape of the Dark Peak and South Pennines will be sustainable and resilient. It will be valued for its healthy, functioning peat bogs and ecologically diverse moorland fringe. It will be good for wildlife and as a place for everyone to enjoy, now and for generations to come.

