

**JOB DESCRIPTION****JOB TITLE: Mires and Environment Team Project Officer****DEPARTMENT/FUNCTION: Regulation****BASE/AREA: Dulverton (Exmoor National Park Authority Office) and Peninsula House, Exeter****RESPONSIBLE TO: Mires Project Manager****BAND/LEVEL: 3****1. JOB PURPOSE:**

The post-holder will report to the Mires Partnership Manager to assist in the delivery of the Exmoor and other SWW Mires Projects with the project team and partner organisations. The post holder will have an additional role to assist SWW's Environmental Team in the delivery of SWW's catchment management and water conservation programmes.

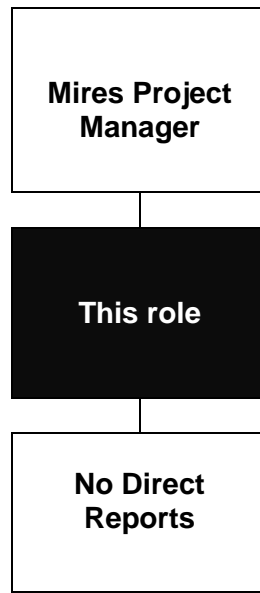
Building on the experience of previous peatland projects (2006-2015), the current SWW mires projects are designed to extend the programme of moorland rewetting across the remaining areas of Exmoor peatland in the headwaters of the Exe and investigate potential in other SW catchments. The restoration has multiple benefits to the aquatic environment and water customers, is integrated with existing moorland land use and furthers National Park purposes where relevant.

These projects continue to focus on investigation, collaboration with partners and stakeholders, and be innovative and creative in seeking to develop integrated approaches to peatland and catchment management.

The post holder will need to work with stakeholders within partnerships and negotiate with individual landowners and managers over the future management of their land. Much of the work involves working with landowners, farmers or other members of the public and the post holder must be able to liaise with tact and diplomacy.

In addition to the Mires work the post holder will have an opportunity to develop their role to include assisting in the delivery of SWW's catchment management and water conservation responsibilities within the Environmental services team including the Upstream Thinking programme.

**2. IMMEDIATE STRUCTURE:**



### 3. CORE DUTIES & KEY RESPONSIBILITIES:

- Identification, hydrological survey and assessment of peatland sites for restoration and development of site restoration plans with the Mires Partnership Manager.
- Liaison with moorland land owners/tenants/ users.
- Working with others to secure appropriate and sustainable management of the SSSIs or other land involved so that favourable management of the SSSIs is achieved and maintained.
- Monitoring of vegetation and other key species groups, liaison and assistance with project research programmes, including those run by the University of Exeter.
- Integration of Historic Environment (HE) into the site plans.
- Maintenance of the project survey data bases and GIS/dGPS data.
- Assisting in training provision for students and volunteers in relevant aspects of Mire ecology, hydrology, survey and restoration.
- Assists with administration of project and organisation of project events and activities.
- Working with the SWW Environmental Services and Upstream Thinking teams in the delivery of SWW's catchment management and Water conservation responsibilities as set out in the 2015-20 business plan. This will include activities to promote catchment managements and the wise use of water with water customers and stakeholders.

## 4. PERSON SPECIFICATION

Category	Requirements	Essential/ Desirable	Assessment Criteria
<b>Qualifications/ Training</b>	<ul style="list-style-type: none"> <li>Degree in a Natural Science subject, or relevant vocational qualifications and relevant work experience</li> </ul>	Essential	Application
<b>Experience</b>	<ul style="list-style-type: none"> <li>Management of contracts and supervision of contractors carrying out conservation works</li> <li>Development and implementation of site management plan</li> <li>Working with land-managers and other practitioners</li> <li>Experience of land management particularly upland, peatland or wetlands</li> <li>Communication of peatland ecosystem services and water conservation messages to a wide audience</li> </ul>	Essential  Essential  Essential  Essential	Application/ Interview
<b>Skills/ Knowledge</b>	<ul style="list-style-type: none"> <li>An understanding of upland, peatland or wetland ecology, peatland restoration techniques</li> <li>Field survey and monitoring expertise, including plant (including non vascular plants) and animal identification skills</li> <li>An understanding of catchment ecosystem services, the policy and practice of nature conservation, archaeology and upland farming</li> <li>Ability to use GIS programmes and GPS and interpret remotely sensed data</li> </ul>	Essential  Essential  Desirable  Essential	Application/ Interview  Application/ Interview/ Test  Interview  Application/Int erview
<b>Personal Qualities</b>	<ul style="list-style-type: none"> <li>Spends time and energy developing and sustaining positive collaborate relationships</li> <li>Takes personal responsibility for their work</li> </ul>	Essential  Essential	Interview  Interview

	<ul style="list-style-type: none"> <li>● Reacts in a positive and constructive way to problems and setbacks</li> <li>●</li> <li>● Communicates with people in a way that is meaningful for them</li> <li>●</li> <li>● Ability to empathise with land managers and local community</li> </ul>	Essential	Interview
		Essential	Interview
		Essential	Interview
<b>Other Relevant factors</b>	<ul style="list-style-type: none"> <li>● This post will include field surveys and working with contractors in remote moorland locations. Ability to travel as well as attendance at workshops and conferences, including overnight stays.</li> </ul>	Essential	Application/Interview

**Additional information:**

**Contacts/stakeholders:**

All Partner Upstream Thinking organisations including the National Parks, Regional staff of Natural England and other agencies involved with peatlands.

External contractors with surveying/monitoring and land management expertise.

Land owners and managers of sites

**Budgetary responsibility:**

The post holder will be responsible for acting as lead contact for contractors