



Peatland ACTION

Peatland restoration in Loch Lomond & The Trossachs National Park

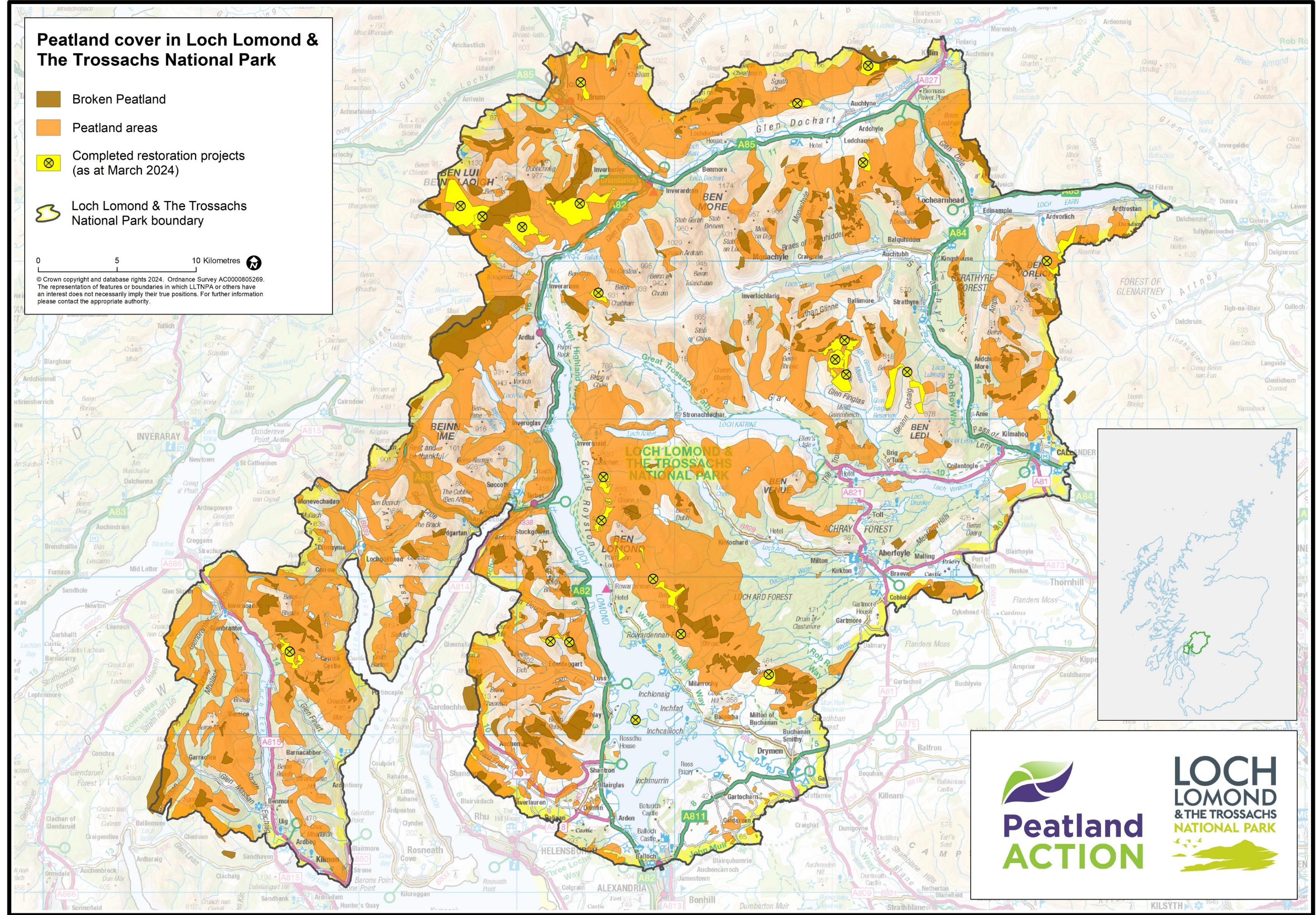
Contributors: Guy Cole, Tasha Caven, Richard Cooper and Matt Dale.

LOCH LOMOND & THE TROSSACHS NATIONAL PARK



What we do in the Park

- Discuss potential projects with estates and eligibility for seeking Peatland ACTION funding.
- Map the potential areas of degraded peat.
- Draw up Peatland Recovery Projects.
- Ensure relevant planning notifications and other permissions are in place.
- Write Statements of Requirements for seeking at least three quotes for the works.
- Ensure all paperwork and processes are covered by CDM regulations.
- Provide 100% funding for the capital works.
- Project manage the construction phase of projects.
- Create progress reports and a final report on completion of projects.



Before restoration work.



After restoration work.



Excavators reprofiling peat hags.



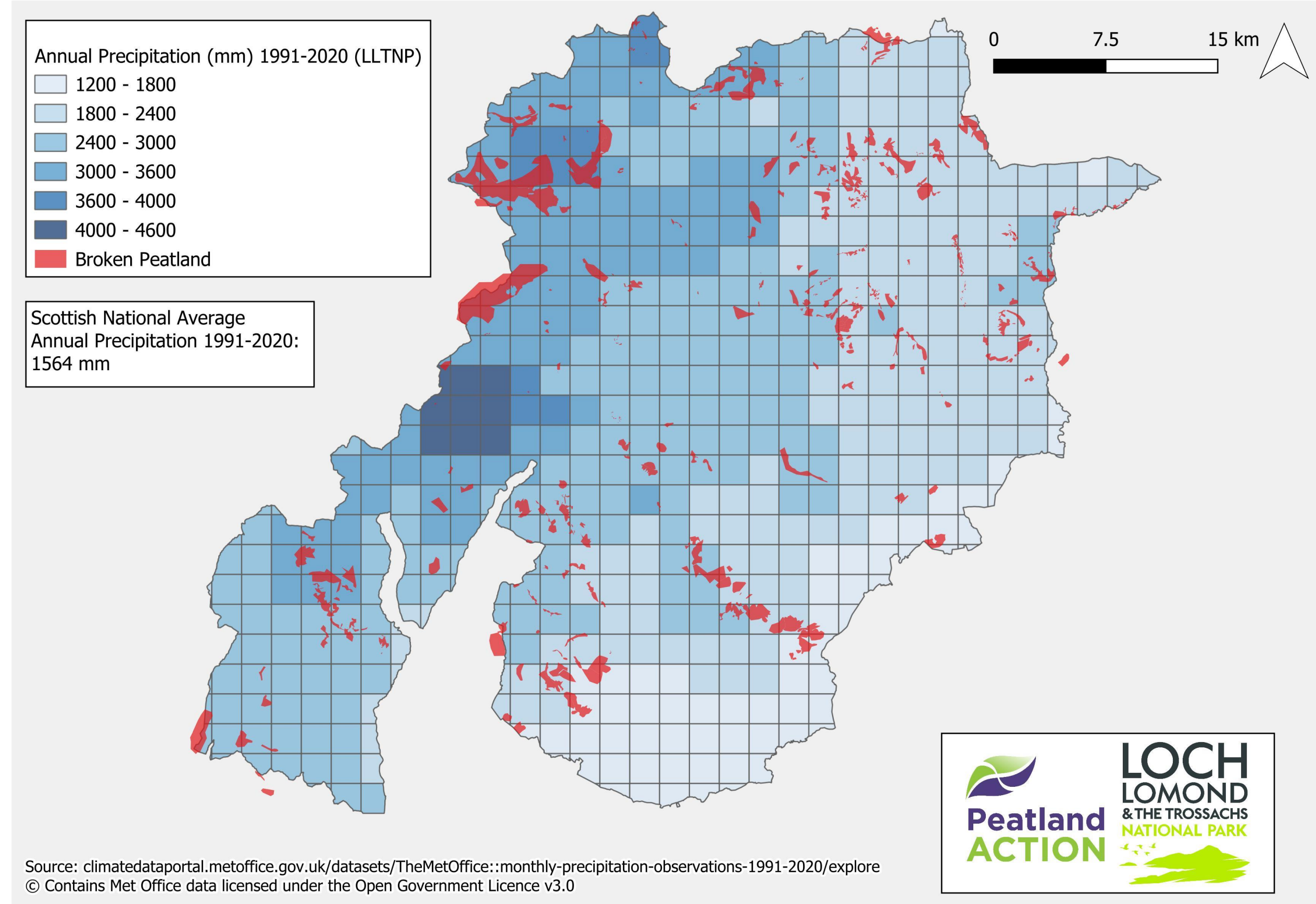
An example of a large area of bare peat at 550 m.



Herbivore impacts can include deer and sheep.

Challenges we face in the Park

- Working at high altitude in mountainous terrain.
- Working in areas with high rainfall and the impact that can have on ground conditions.
- Impacts of high herbivore density.
- Large areas of bare peat.
- Contractor availability.
- Landowner uptake.



Looking to the future

- 8 projects running this year (2024/2025).
- Covering more than 800 hectares.
- Working with both private landowners and charitable trusts.



An example of broken peat within the mountain landscape.

Contact information

Guy Cole

Telephone: 01389 722046

Mobile: 07764 371701

Email: peatland@lochlomond-trossachs.org

Web: <https://www.lochlomond-trossachs.org/park-authority/what-we-do/conservation/peatland-restoration/>