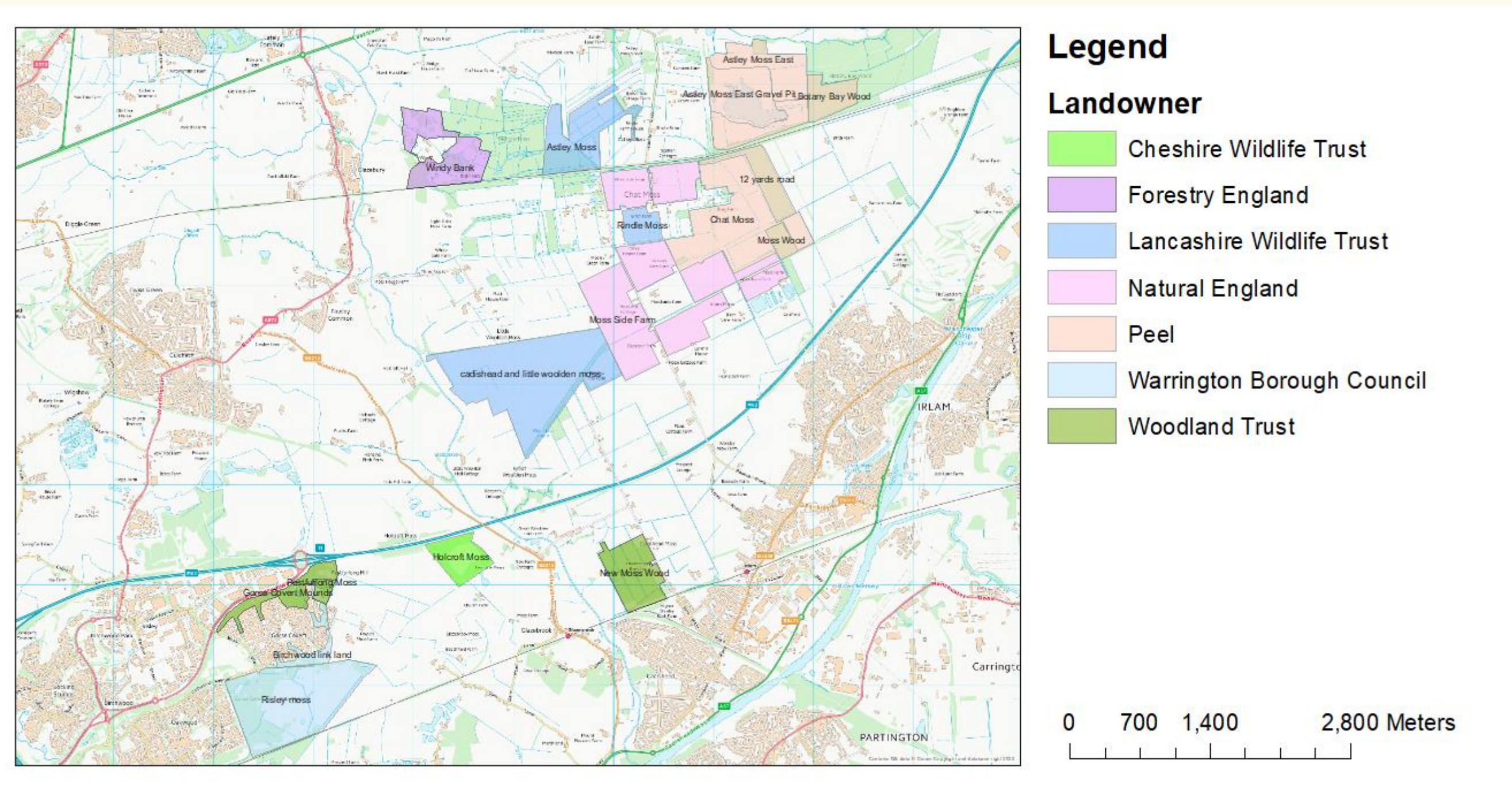


Moss Side Farm



One of the farm fields showing Fen characteristics before restoration work has taken place. Some areas had not been farmed for a year or more due to poor drainage.

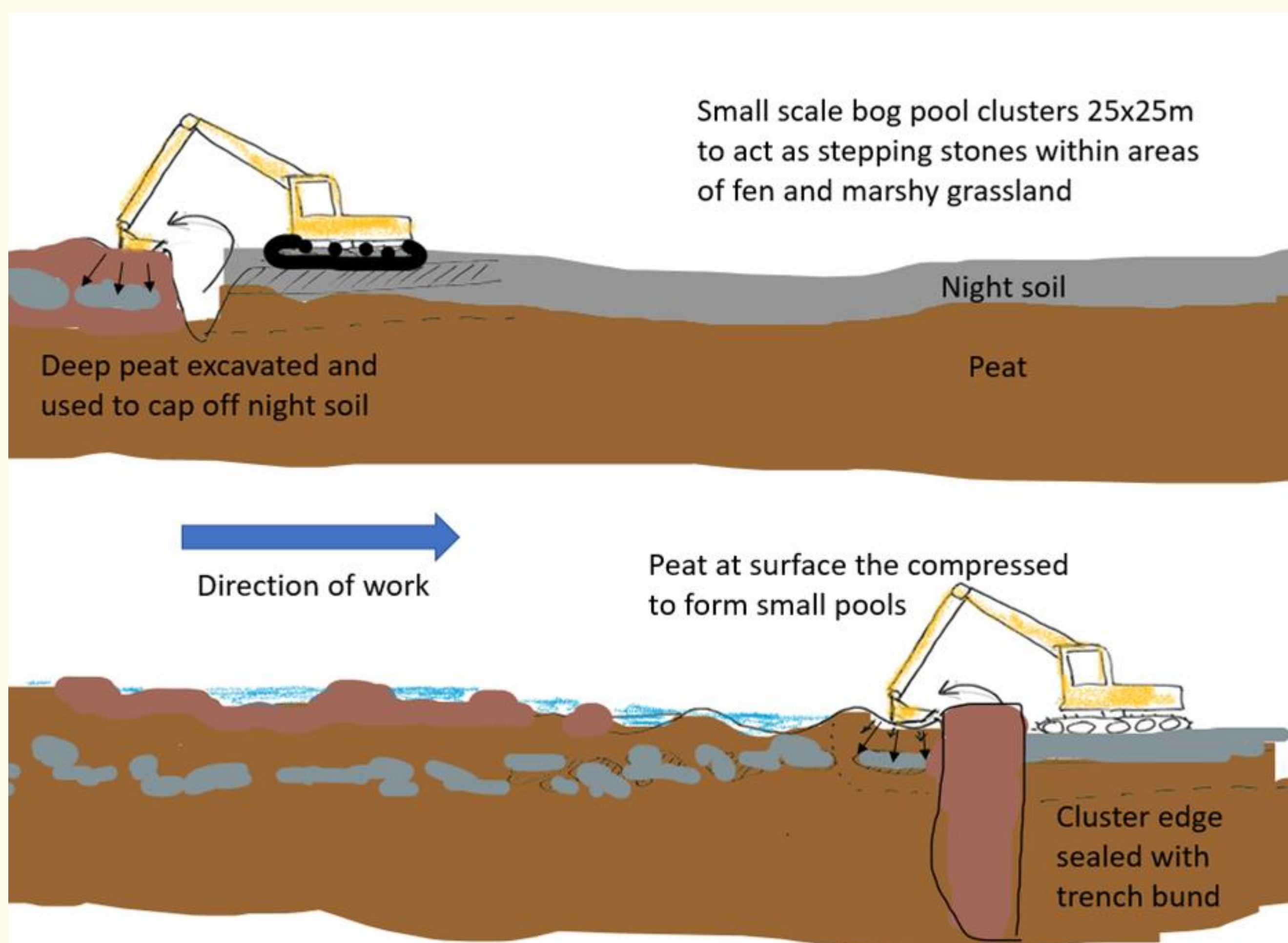
- Natural England purchased 154ha of arable land in 2022/23 on Chat Moss in Greater Manchester.
- The peat to a depth of 50cm is humified and heavily degraded as a consequence of 150 years of agricultural improvement with night soil and fertilisers.
- We are undertaking work to create a mosaic of wetland habitats allowing an element of natural recovery as well as more intensive interventions.
- Some fields have and will be restored through the Nature for Climate Peatland Grant Scheme led by Lancashire Wildlife Trust and some work delivered through Defra Grant in Aid.
- We are working with several academic institutions including MMU and LJMU, as well as CEH to deliver a range of research, some funded through EU Horizon.
- The site will form part of a new NNR that will include the Manchester Mosslands SAC sites.



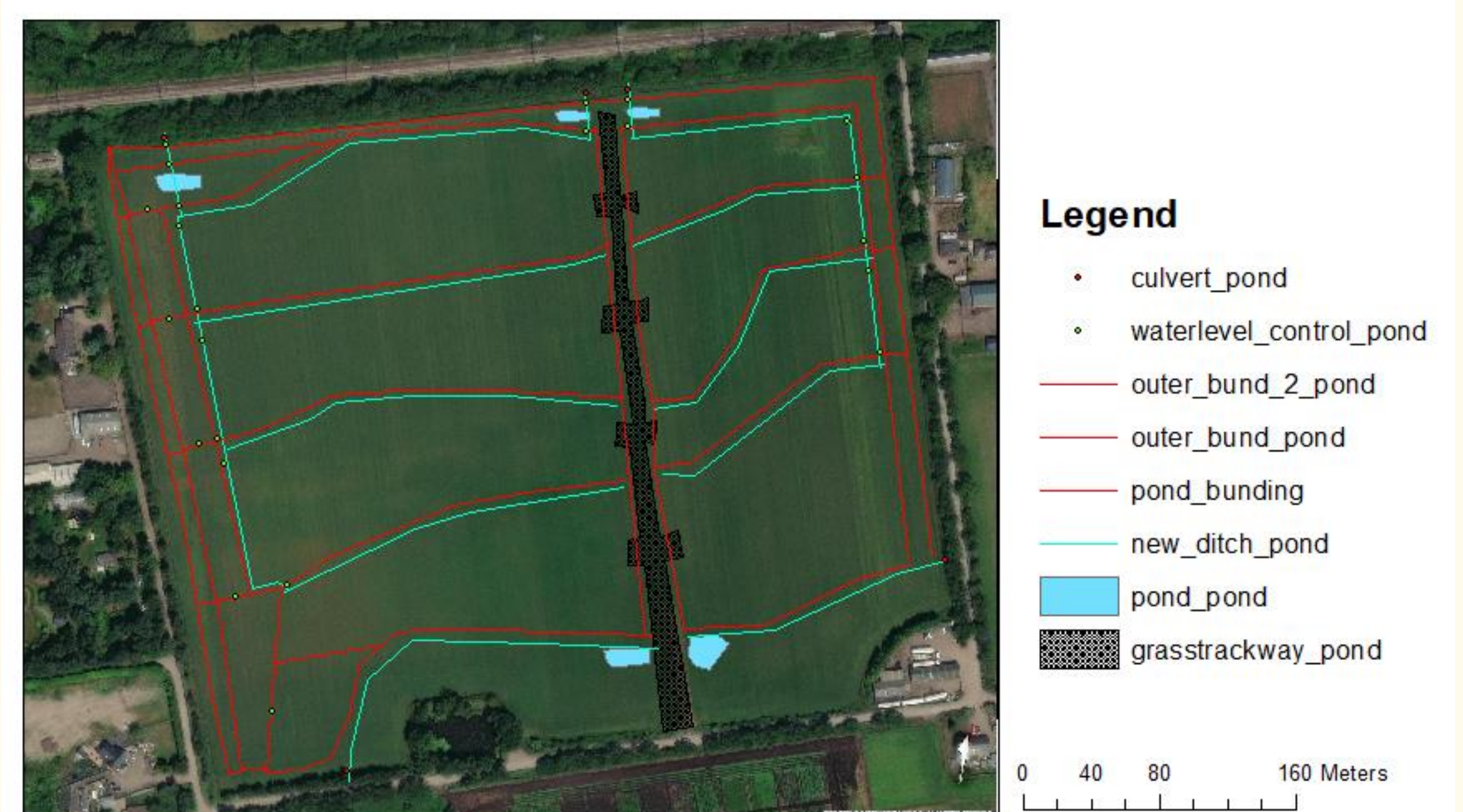
Map showing local partners land ownership. The area is part of the Great Manchester Wetlands.



Plans showing how the Nature for Climate Peatland Grant Scheme will restore four of the farm fields. Local infrastructure will be protected from flooding by large buffer areas.



Inverting the enriched soil layer to create stepping stones of bog habitat is a method we are experimenting with to connect existing habitats. We are monitoring the gas exchange before and after these works.



Plans for a paludiculture trial through the Horizon Project Palus Demos. This will help to reduce nutrients in the peat as well as demonstrating wetter farming.