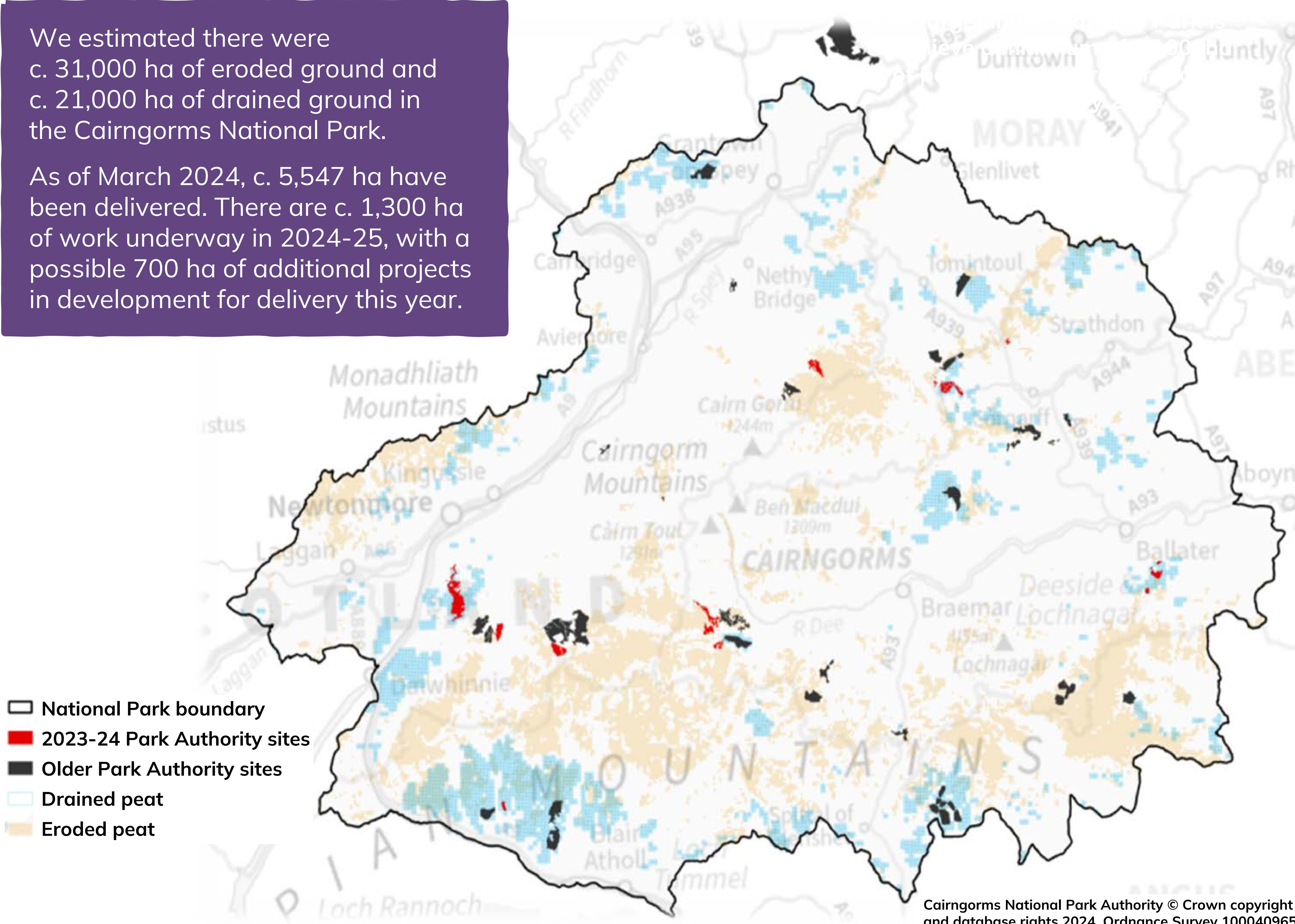


We estimated there were c. 31,000 ha of eroded ground and c. 21,000 ha of drained ground in the Cairngorms National Park.

As of March 2024, c. 5,547 ha have been delivered. There are c. 1,300 ha of work underway in 2024-25, with a possible 700 ha of additional projects in development for delivery this year.



Cairngorms National Park Authority © Crown copyright and database rights 2024. Ordnance Survey 100040965



Projects include bog woodland restoration



Sites frequently have challenging bare peat with poor turf availability



The National Park has large expanses of drained peatland with variable peat depths



Overburning on grouse moors has left a legacy of poor turf condition to work with



There are expanses of complex erosion with no machine access, at high elevations – most of this work sits at 600-900m asl



Severe winter weather can span from October to March in the Cairngorms



Herbivore impacts may limit choices for restoration techniques in places



Contact the team:
peatlandaction
@cairngorms.co.uk