

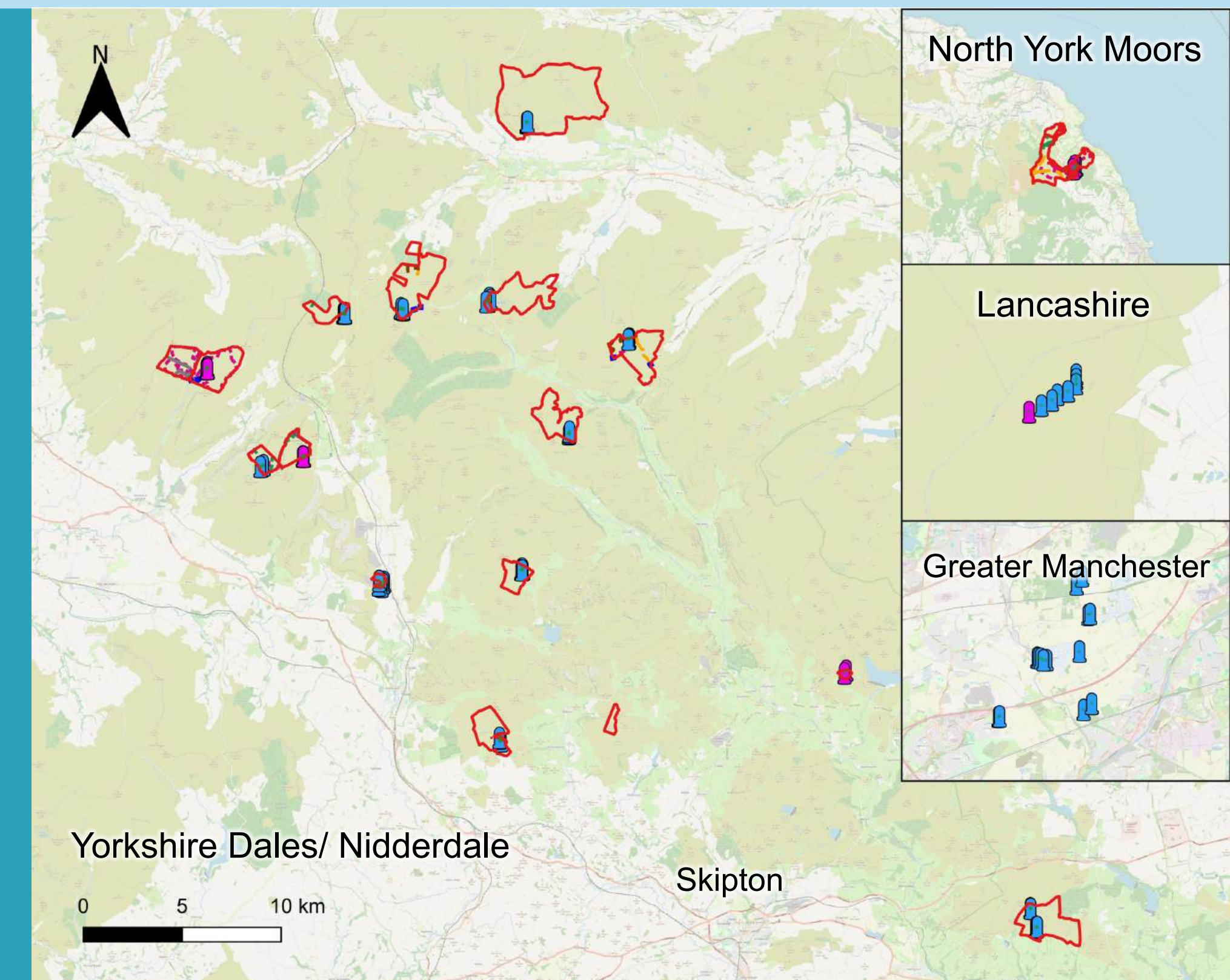
Eyes on the Bog: A Clear Vision for Citizen Science Monitoring

Lucy Cardy¹, ¹Yorkshire Peat Partnership - Unit 23 Skipton Auction Mart, Gargrave Road, Skipton, BD23 1UD, UK (yppartnership.org.uk - info@yppartnership.org.uk)

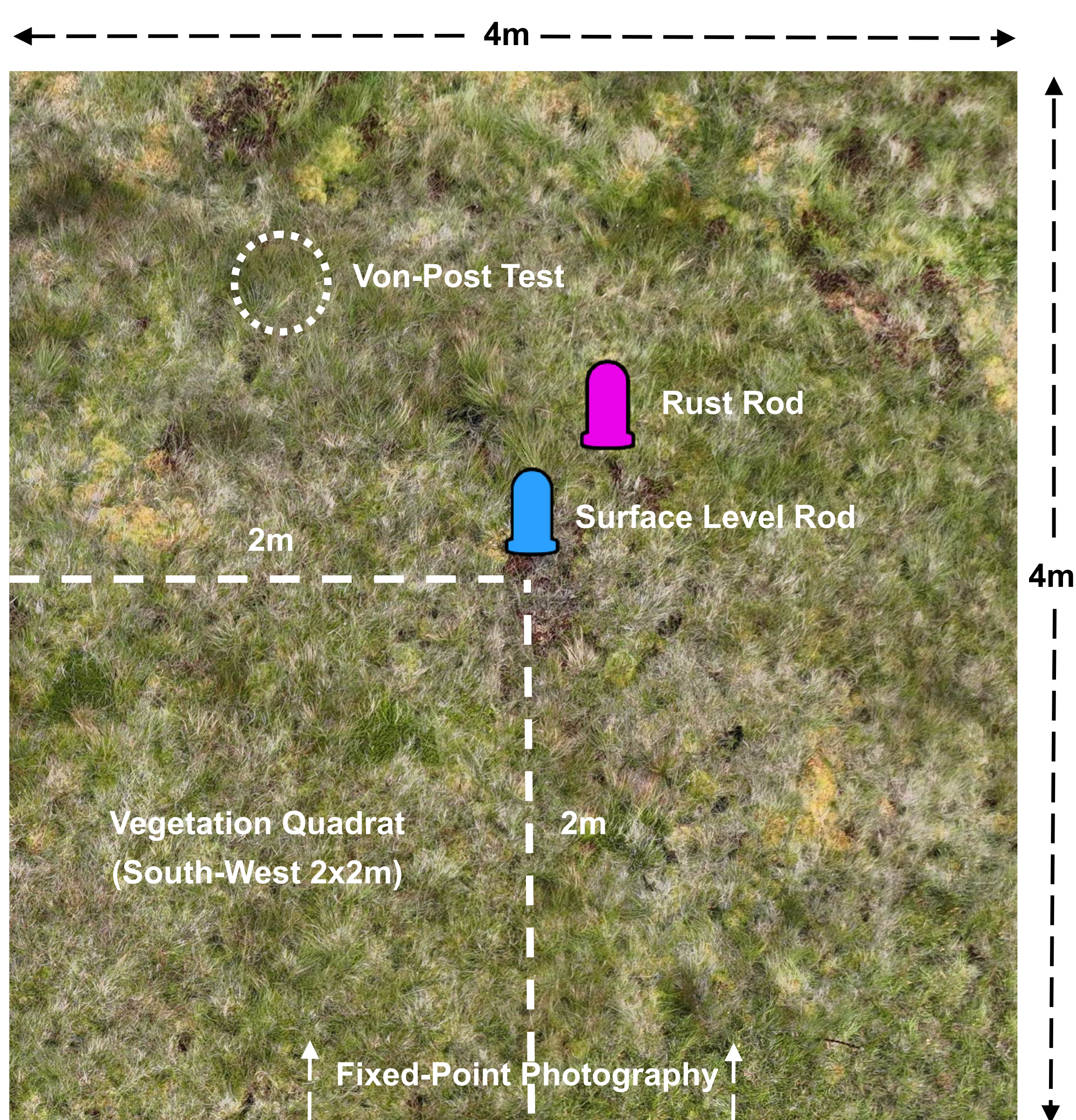
The Evolution of YPP's Eyes on the Bog Programme

Increasing the reach of Eyes on the Bog

- Eyes on the Bog was developed by the IUCN in 2019 as a low-cost, accessible and robust monitoring methodology for peatlands. It was inspired by the Holme Fen Post in Cambridgeshire, an iron pillar buried in 1848 which stands 4-metres proud of the surface due to surrounding peat loss.
- YPP's Eyes on the Bog Team started out in December 2021, with a view to adopt citizen science monitoring. Over the years, the team, and the number of sites regionally set up with Eyes on the Bog has grown rapidly:
 - 2021 - 2 YPP Staff, 2 sites, 12 plots across the Yorkshire Dales/ Lancashire
 - 2022 - 2 YPP Staff, 17 sites, 71 plots across the Yorkshire Dales/ Lancashire/ Greater Manchester
 - 2023 - 7 YPP Staff, 20 sites, 80 plots across the Yorkshire Dales/ Lancashire/ Greater Manchester
 - 2024 - 7 YPP Staff, 25 sites, 106 plots across the Yorkshire Dales/ Lancashire/ Nidderdale/ North York Moors /Greater Manchester
- At present, 53 of the 106 plots are in active management by YPP, across 13 sites.



"I'm grateful to have the opportunity to put something back into the environment I've enjoyed for so long" - Stephen, YPP Volunteer



Monitoring in Motion: The 4 P's Partnerships!

- In two and a half years of our Eyes on the Bog programme, we have partnered with the National Trust, North York Moors National Park, Lancashire Peat Partnership and local community/ education groups to deliver the monitoring.

Protocols!

- To supplement the Eyes on the Bog monitoring, we have added an in-depth vegetation survey for the south-west 2x2m area of the plot. The survey uses the Domin Scale across 12 categories. To date, this has yielded 2,077 vegetation records.

Projects!

- We are grateful to Inntravel, the IUCN Peatland Programme, and North Yorkshire County Council for their generous contributions to our Eyes on the Bog Programme. This has enabled us to purchase kit, fund dedicated staff time, and begin a project engaging local schools in monitoring, called 'New Kids on the Bog'.

Particulars of Data Management!

- All Eyes on the Bog records are collected using KoboCollect - an open-source platform for data collection. Our volunteers have access to custom-made forms to autonomously collect and upload their data straight to an online database.
- The data is transferred to our internal database, called 'BogBase'.
- All plots are mapped using high-accuracy GPS devices called Geodes, and MerginMaps on a Samsung Galaxy Tab Active 3 LTE. This data is stored in BogBase.



"We have enjoyed monitoring our own area and contributing to vital work in restoring Peatlands!" - Janet & Keith, YPP Volunteers

YPP Eyes on the Bog Community Day

In April 2024, we welcomed over **80** guests to our first Eyes on the Bog Community Day. With contractors, volunteers, land-owners, funders and partner organisations in attendance, this was a fantastic day for networking and knowledge-sharing.

Volunteer Engagement

At present, we have **58** active or interested volunteers for Eyes on the Bog. With New Kids on the Bog underway, this will increase with the help of **10** local community groups, across schools and scouting chapters in the Wharfedale and Ure Dales area.

